

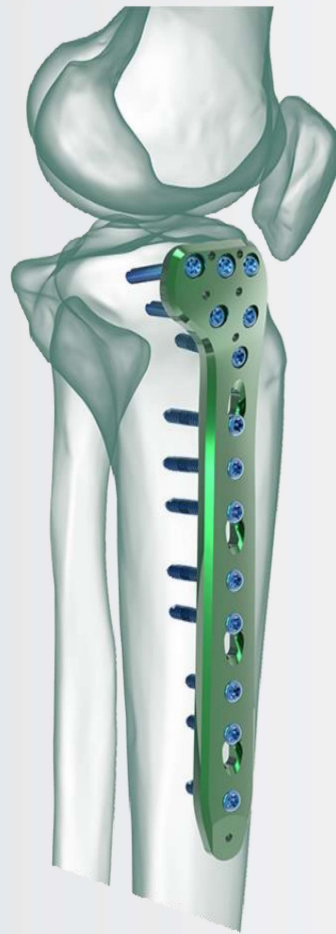
TRUE LOCK Proximal Tibia Medial Anatomic Plates are indicated for metaphyseal fractures of the medial tibial plateau, split-type fractures of the medial tibial plateau, medial split fractures with associated depressions and split or depression fractures of the medial tibial plateau.

Tibia shaft fractures have taken the forefront of long bone fractures, which are the most common today with the advancement of technology and the increase in the number of people involved in sports activities. It accounts for about 15% of all fractures.

Anatomical plate; right & left.

9 hole options between 5-21.

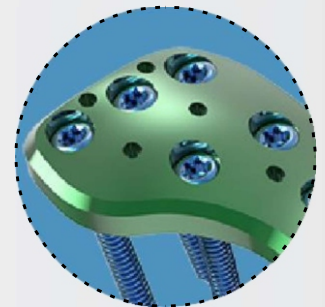
TRUE LOCK Proximal Tibia Medial Anatomic Plates are made of Ti6Al4V ELI material (ASTM F136).



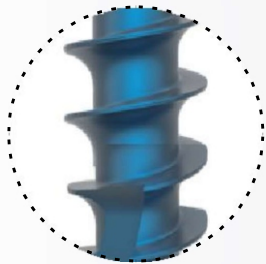
TRUE LOCK Proximal Tibia Medial Anatomic Plate Features

Anatomically contoured to match the lateral proximal tibia.

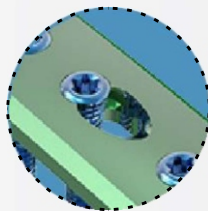
Proximal bend "lower" than standard plate



2.1 mm holes for preliminary fixation with Kirschner wires, or meniscal repair with sutures.



At the cancellous part of the bone near the joint, 4,0 mm cancellous locking screw option supports plate and screw fit well; prevents it from pull out .



The combi-hole provides flexibility of axial compression and locking capability throughout the length of the plate shaft.

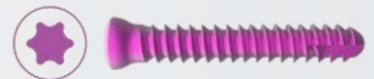


Limited contact profile to avoid stress

TRUE LOCK Proximal Tibia Medial Anatomic Plate Screws Info

Reference Number:	Hole Count:	Length (mm)
(L) 201-11071-005 (R) 201-11072-005	5 hole	90
(L) 201-11071-007 (R) 201-11072-007	7 hole	120
(L) 201-11071-009 (R) 201-11072-009	9 hole	145
(L) 201-11071-011 (R) 201-11072-011	11 hole	170
(L) 201-11071-013 (R) 201-11072-013	13 hole	195
(L) 201-11071-015 (R) 201-11072-015	15 hole	220
(L) 201-11071-017 (R) 201-11072-017	17 hole	245
(L) 201-11071-019 (R) 201-11072-019	19 hole	270
(L) 201-11071-021 (R) 201-11072-021	21 hole	295

3.5 mm Non-Locking Cortical Screw



3.5 mm Locking Cortical Screw



4 mm Non-Locking Cancellous Screw



4 mm Locking Cancellous Screw



4 mm Locking Cannulated Cancellous Screw

