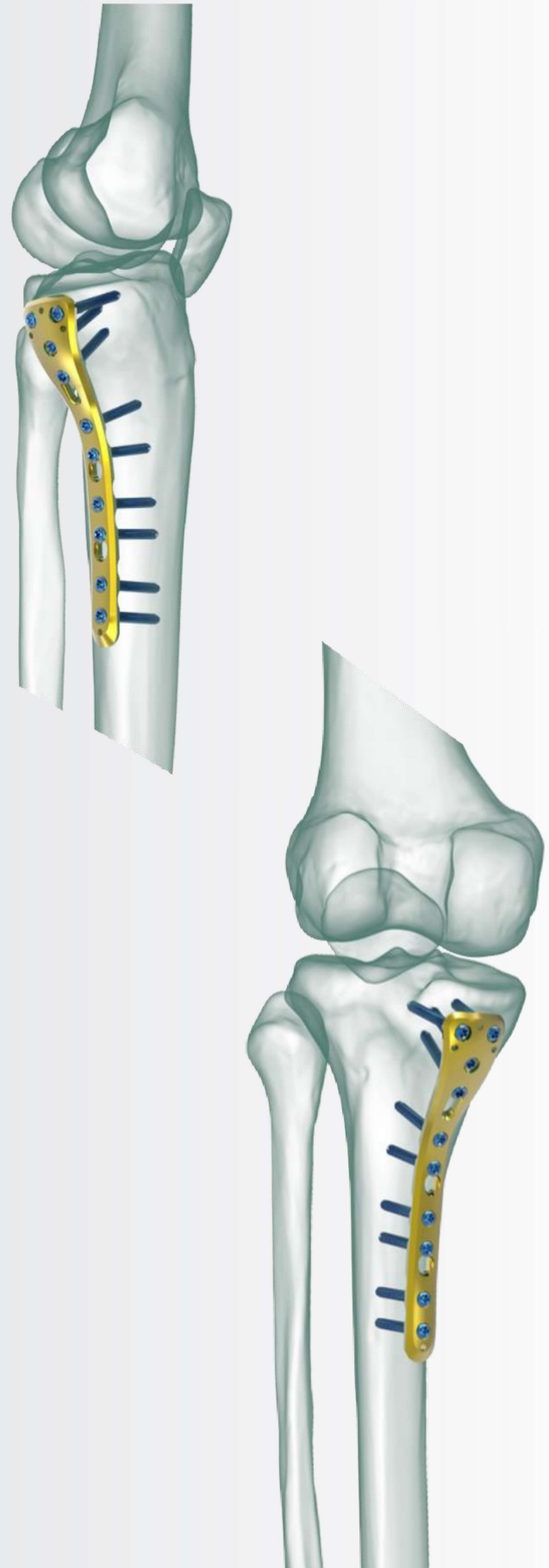


TRUE LOCK Proximal Tibia Posteromedial Plates are indicated for internal fixation of posteromedial proximal tibia fractures including buttressing of fractures of the proximal, distal, and metaphyseal areas of the tibia.

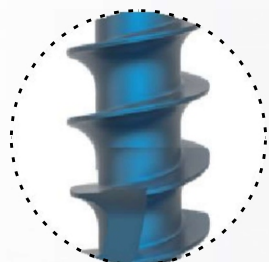
Tibia shaft fractures have taken the forefront of long bone fractures, which are the most common today with the advancement of technology and the increase in the number of people involved in sports activities. It accounts for about 15% of all fractures.

3 hole options between 3-7.

TRUE LOCK Proximal Tibia Posteromedial Plates are made of Ti6Al4V ELI material (ASTM F136).



TRUE LOCK Proximal Tibia Posteromedial Plate Features

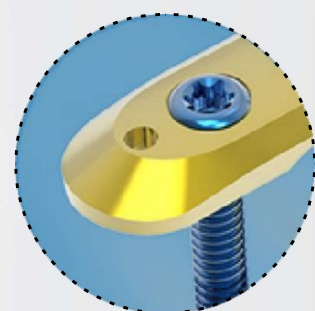


At the cancellous part of the bone near the joint, 4,0 mm cancellous locking screw option supports plate and screw fit well; prevents it from pull out .

Limited-contact surface reduces bone-to-plate contact and helps to preserve the periosteal blood supply.

Elongated Combi holes in the neck and shaft facilitate plate adjustment and allow locking or compression options.

Combi holes allow locking or compression options



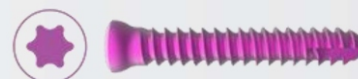
Kirschner wire holes accept Kirschner wires (up to 2.0 mm) to temporarily fix the plate to the tibia , to temporarily reduce articular fragments, and to confirm the location of the plate, relative to the tibia.



TRUE LOCK Proximal Tibia Posteromedial Plate Screws Info

| Reference Number: | Hole Count: | Length (mm) |
|-------------------|-------------|-------------|
| 201-11420-003 | 3 hole | 60 |
| 201-11420-005 | 5 hole | 85 |
| 201-11420-007 | 7 hole | 110 |

3.5 mm Non-Locking Cortical Screw



3.5 mm Locking Cortical Screw



4 mm Non-Locking Cancellous Screw



4 mm Locking Cancellous Screw



4 mm Locking Cannulated Cancellous Screw

